



Part # ACC-BF



Part # ACC-LBF

FIXTURE BANKING PLATES

- ✓ Part# ACC-BF 6" x 1" (150x25mm)
- ✓ Part# ACC-LBF 3" x 2.5" (75x63mm)
- ✓ Precision ground steel
- ✓ Reversible for left or right bank
- ✓ Can be used on horizontal stages



Part # ACC-V2
(Only vertical V)



Part # ACC-V1

PRECISION FIXTURE VISE

- ✓ Part# ACC-V1 jaw opening of 1.25" (32mm)
- ✓ Part# ACC-V2 jaw opening of 2.12" (54mm)
- ✓ Precision ground steel
- ✓ Vertical and horizontal V



PRECISION VISE STAND

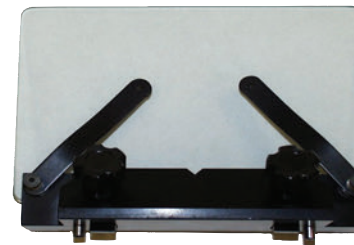
- ✓ Fixture to hold vise in 2 axes
- ✓ Part# ACC-PVS (ACC-V1 sold separately)



Part # ACC-VB1

PRECISION V BLOCK

- ✓ Part# ACC-VB1
- ✓ Precision V block
- ✓ Hardened and ground steel
- ✓ 90 degree V 2.7" (70mm)high



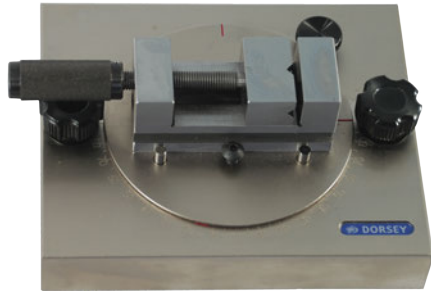
Part # ACC-VF7X5

VERTICAL GLASS FIXTURE

- ✓ Part# ACC-VF7x5
- ✓ Used to mount flat parts on horizontal comparators
- ✓ 7" x 5" (178x127mm) glass
- ✓ 2 Chart clips & V



Dorsey Products - proudly made in the USA



Part # ACC-RV1

ROTARY VISE STAGE

- ✓ Part# ACC-RV1 jaw opening of 1.25" (32mm)
- ✓ Part# ACC-RV2 jaw opening of 2.12" (54mm)
- ✓ Precision ground steel
- ✓ Positions vise in X, Y, or Z axis
- ✓ 360 degree rotation with 1 degree graduation



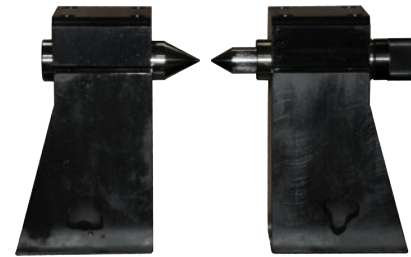
Part # ACC-RV2



Blocks lock into standard .5" dovetail

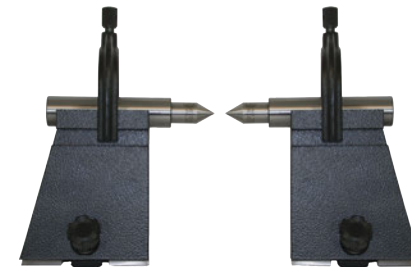
MACHINABLE FIXTURE BLOCKS

- ✓ Used to make custom fixtures
- ✓ Precision machined steel
- ✓ Available :
 - > 2" (50mm) Part #ACC-FB2
 - > 4" (100mm) Part #ACC-FB4
 - > 6" (150mm) Part #ACC-FB6
 - > 8" (200mm) Part #ACC-FB8



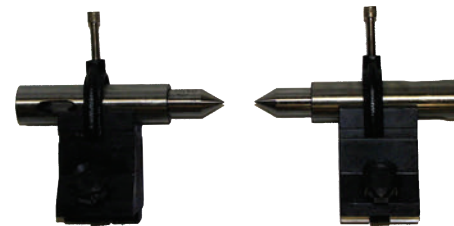
BENCH CENTERS

- ✓ Part# ACC-VBC5.38
- ✓ Matched ground hardened steel
- ✓ 90 degree V
- ✓ 5.385" (137mm) tall
- ✓ 3/4" (19mm) diameter centers with fine adjustment
- ✓ 1.25" (32mm) fixed center



HEAVY DUTY V BLOCK & CENTER KIT

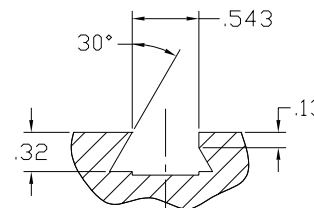
- ✓ Part# ACC-VBCHD
- ✓ Matched ground cast iron
- ✓ 90 degree V
- ✓ 5" (127mm) tall
- ✓ 1" (25mm) diameter centers with interchangeable Morse taper insert and clamps



Part # ACC-VBC2.5

PRECISION V BLOCK & CENTER KIT

- ✓ Part# ACC-VBC2.5
- ✓ Matched ground hardened steel
- ✓ 90 degree V
- ✓ 2.7" (70mm) tall
- ✓ 1" (25mm) diameter centers with interchangeable Morse taper insert and clamps



Typical universal dove tail detail used on all horizontal staging

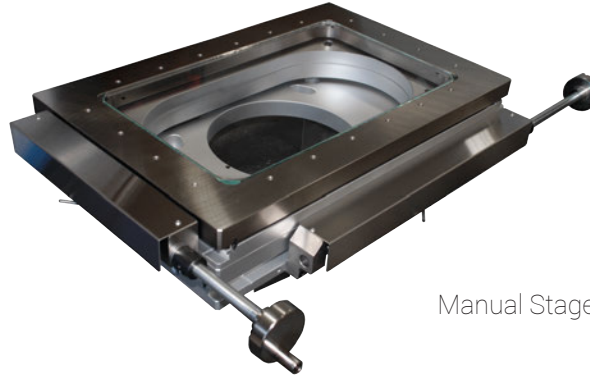
For special fixtures contact Dorsey Metrology or your local Dorsey representative.

ULTRA PRECISION COORDINATE STAGING

These precision coordinate stages can be used for optical comparators, vision systems, or microscopes. Each stage features high precision bearings.

FEATURES:

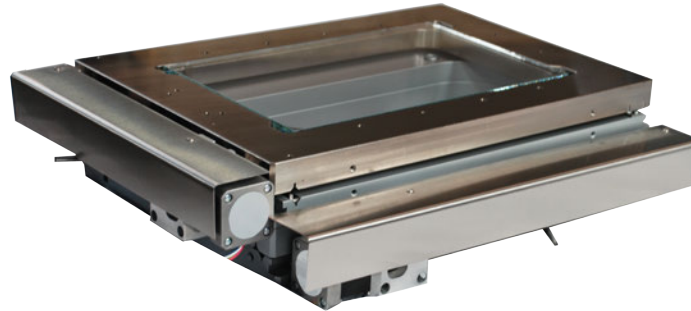
- ✓ Solid or glass plate stages available
- ✓ High precision linear bearings
- ✓ Hard nickel plated surfaces
- ✓ Fixturing holes with universal spacing
- ✓ Quick release on both axes on all manual stages
- ✓ Static axis bias on stage drives increases accuracy
- ✓ Universal mounting options fit many existing systems
- ✓ Scale resolution of 0.1 (one tenth) micron is standard
- ✓ Motorized versions available with stepper motors
- ✓ Motorized versions available with limit switches
- ✓ Accuracy formula +/- .004 +[(L/20).001]
- ✓ NIST traceable calibration certificate
- ✓ 2 Year Warranty



Manual Stage



Static Fixture Plate



Motorized



Solid Stage

CONFIGURING A STAGE

PART NUMBER

- ✓ Select stage travel
- ✓ After stage travel, add MN for manual or MO for motorized (Special cables, controls, and joysticks priced separately).
- ✓ After MN or MO add -01 for scales
- ✓ Example: 8X4MN-01 = 8" X 4" manual stage with scales

TECHNICAL SPECIFICATIONS				STAGE TRAVEL	
STAGE TRAVEL (X/Y)	WEIGHT CAPACITY	FRAME SIZE	GLASS PLATE SIZE	MANUAL	MOTORIZED
Static fixture plate = SFP	75 lbs*	11" x 7.4"	7" x 4.5"	Static	Static
6" x 4"	75 lbs*	15" x 10.5"	11" x 7"	Available	Available
8" x 4"	75 lbs*	15" x 10.5"	11" x 7"	Available	Available
8" x 6"	75 lbs*	15" x 15"	10.5" x 10.5"	Available	Available
8" x 8"	75 lbs*	15" x 15"	10.5" x 10.5"	Available	Available
12" x 4"	75 lbs*	16.5" x 7.4"	13.5" x 4.5"	Available	Available
12" x 6"	75 lbs*	16.5" x 7.4"	13.5" x 4.5"	Available	Available
12" x 12"	75 lbs*	21" x 21"	14.9" x 14.9"	Available	Available
13" x 13"	75 lbs*	20" x 20"	Solid stage only	Available	Available
16" x 6"	75 lbs*	23" x 15"	18.5" x 10.5"	Available	Available
16" x 8"	75 lbs*	23" x 15"	18.5" x 10.5"	Available	Available

*only 15 lbs on center of glass