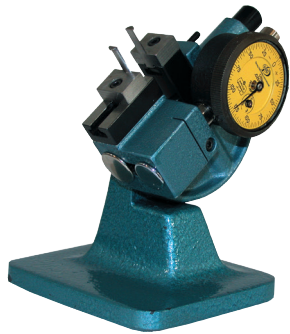


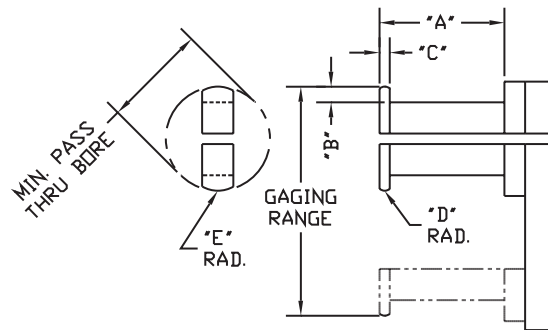
Dorsey's Dynamike Model DYS groove gage combines a lightweight, compact, rigid cast frame and a patented ball bushing slide with a series of interchangeable gaging arms to suit virtually any application.

FEATURES:

- 25" (6mm) of gaging travel / retraction
- .25" to .75" (6mm-19mm) diameter range
- 1.25" (32mm) long precision ground adjustment rail
- Can accommodate dial or digital indicator
- Retraction pulls away from indicator



Gage shown is DYS with special metric indicator, part #2305-2 arms part #2349 bench stand



Shown actual size

The DYS Groove Gage is supplied per model # below with DYS Groove Gage body, model # 1DM125-05 dial indicator, .0005" graduation, and the appropriate contact arm set for the range noted below. Other indicators can be substituted.

PART #	RANGE	MIN / BORE	TYPE	"A" Dim.	"B" Dim.	"C" Dim.	"D" Dim.	"E" Dim.	CONTACT ARM #
DYS-250-2	.250 - .500	.187	2 Point	.500	.030	.030	.030	.092	# 2305-2
DYS-250-3	.250 - .500	.187	3 Point	.500	.030	.030	.030	.092	# 2305-3
DYS-500-2	.500 - .750	.350	2 Point	1.000	.075	.060	.060	.172	# 2306-2
DYS-500-3	.500 - .750	.350	3 Point	1.000	.075	.060	.060	.172	# 2306-3

PART #	DESCRIPTION
DYS-FRAME	DYS Groove Gage body only, less gaging arms and indicator
2349	For the Bench Stand used with the DYS gages
2335	Clamp nut used with part #2305 & #2306 contact arms

***Note:** For pricing on special gaging arms to suit a specific application, submit the part print with your quotation. Arms can be ordered separately.

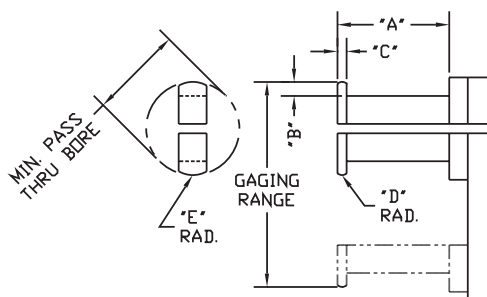
Dorsey's Dynamike Model DYN groove gage combines a patented ball bushing slide with a series of gaging arms to suit almost any application. Gaging contact retraction is accomplished by using a conveniently mounted thumb lever while gaging range adjustment is accomplished by sliding the static gaging arm along its precision ground rail.

FEATURES:

- .500" (13mm) of gaging travel/retraction
- .75" to 3.50" (19mm - 88mm) diameter range
- 3" Long precision ground adjustment rail
- Precision machined cast jig plate frame
- Thermal isolation grips
- Can accommodate any of Dorsey "High Amplification", "Traditional", or digital indicator
- Retraction pulls away from indicator
- Indicator can be rotated 360 degrees to suit any application



Shown with 2DM125-05 dial indicator .0005" graduation.



The DYN Groove Gage is supplied per model # below with DYN Groove Gage body, model # 2DM125-05 dial indicator, .0005" graduation, and the appropriate contact arm set for the range noted below.

PART #	RANGE	MIN / BORE	TYPE	"A" Dim.	"B" Dim.	"C" Dim.	"D" Dim.	"E" Dim.	CONTACT ARM #
DYN-750-2	.750 - 2.00	.500	2 Point	1.50	.125	.125	.125	.245	# 2405-2
DYN-750-3	.750 - 2.00	.500	3 Point	1.50	.125	.125	.125	.245	# 2405-3
DYN-2000-2	2.00 - 3.50	2.000	2 Point	2.00	.125	.125	.125	.750	# 2465-2
DYN-2000-3	2.00 - 3.50	2.000	3 Point	2.00	.125	.125	.125	.750	# 2465-3

PART #	DESCRIPTION
DYN-FRAME	DYN Groove Gage body only, less gaging arms and indicator
48502-S	For the Bench Stand used with the DYN gages
2335	Clamp nut used with part # 2405 & #2465 contact arms

***Note:** For pricing on special gaging arms to suit a specific application, submit the part print with your quotation. Arms can be ordered separately.

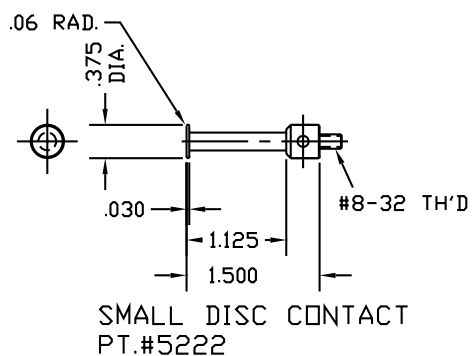
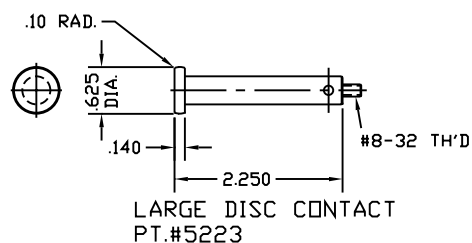
Dorsey's universal measuring gage was designed to combine our proven patented precision linear movement with a frame that accommodates a wide variety of contacts. This gage can precisely measure various internal and external dimensions such as diameters, grooves, splines, tapers, wall thickness, counterbores, hole locations, and even threads.

FEATURES:

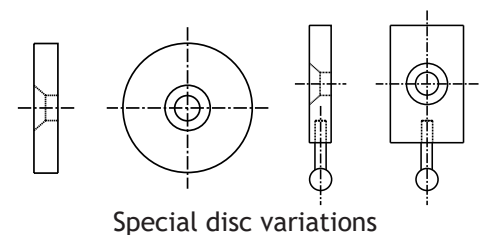
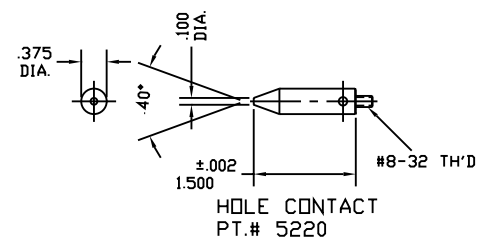
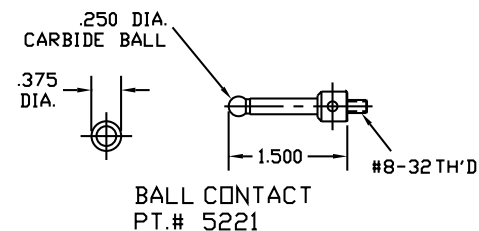
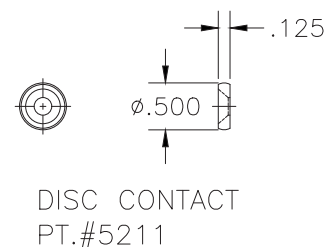
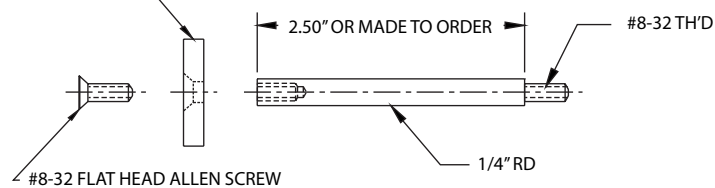
- Patented linear slide with 1" (25.4 mm) of gaging travel / retraction
- Indicator can be rotated 360 degrees to suit application
- Measurement range 0-5" OD / 2-5" ID
- Lightweight precision machined aluminum frame
- Can accommodate dial or digital indicators



*Indicator sold separately



DIAMETER, LENGTH AND DEPTH CONTACT
MADE TO THE GROOVE APPLICATION



Dorsey can design and make contacts specific to the customers application. For this service a part print is required.

MODEL	DESCRIPTION
UG-1	Universal gage complete with standard disc contact (part #5211)
UG-KIT	Universal gage complete with standard disc contact, ball contacts, .25" disc contacts, and digital indicator.
48502-S	Bench Stand for UG