

Pin type dial bore gages are an accurate, economical, and versatile alternative to the ID micrometer. These gages do not reference or rest on a datum surface and are therefore ideally suited for applications such as ID splines, gears, or threads.

How to order DS-B4 Pin gage assembly: select gage dial unit which includes gaging contacts and then select a spacer or adapter as required.

GAGE (INCLUDING DIAL UNIT AND GAGING CONTACTS)		
PART #	GRAD	RANGE
DS-B4-2I9-01	.0001"	.009"
DS-B4-2DM025-01	.0001"	.025"
DS-B4-2I50-01	.0001"	.050"
DS-B4-2I100-025	.00025"	.100"
DS-B4-2I100-05	.0005"	.100"
DS-B4-S2I/M	.0001"/0.0025mm	.010"/.25mm
DS-B4-2I02-002mm	0.002mm	0.2mm
DS-B4-2I10-002mm	0.002mm	1.0mm
DS-B4-2I25-005mm	0.005mm	2.5mm

PIN GAGE MASTERS "PM SERIES"		
PART #	RANGE	
	INCHES	METRIC
PM-6	6 - 12"	150 to 300
PM-12	12 - 18"	300 to 450
PM-18	18 - 24"	450 to 600
PM-24	24 - 30"	600 to 750
PM-30	30 - 36"	750 to 900

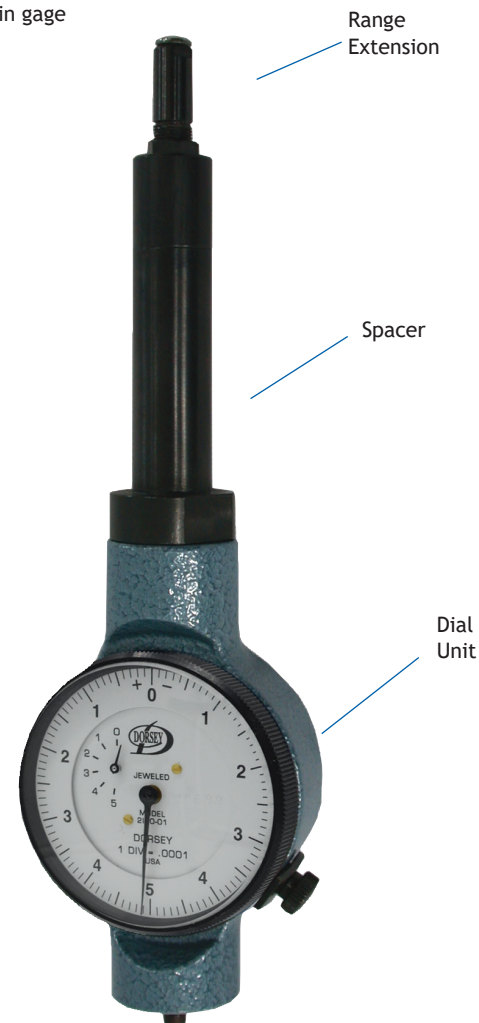
PART #	SPACER LENGTH	RANGE	
		INCHES	METRIC
DS-B4-85140	Adapter	4.5 - 7	114 - 178
DS-B4-81845	3"	7 - 10	178 - 254
DS-B4-81849	6"	10 - 13	254 - 330
DS-B4-81853	9"	13 - 16	330 - 406
DS-B4-81857	12"	16 - 19	406 - 483
DS-B4-81861	15"	19 - 22	483 - 559
DS-B4-81865	18"	22 - 25	559 - 635
DS-B4-81869	21"	25 - 28	635 - 711
DS-B4-81873	24"	28 - 31	711 - 787
DS-B4-81877	27"	31 - 34	787 - 864
DS-B4-81881	30"	34 - 37	864 - 940
DS-B4-81885	33"	37 - 40	940 - 1016
DS-B4-81886	Full Set	4.5 - 40	114 - 1016

***Note:** Gage pictured features DS-B4-2I100-05 dial unit and DS-B4-81853 9" spacer

PM Series adjustable setmaster
6" diameter range adjustment and
.50" fine adjustment



DS-B4 series
dial pin gage



Gage kits include .0005" graduation dial indicator. Ball contacts are available for measuring pitch diameters.

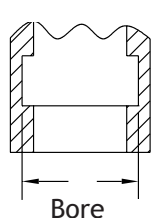
Available as a complete set or as an individual gage with a 3" range of adjustment.

Adjustable inside diameter pin gages are used to check various applications including, Straight bores, Inside grooves, spherical radii, spline, gear and pitch diameters. We offer a variety of interchangeable threaded contacts to suit each application. The Retractable pin gage provide the principle and portability of an inside diameter micrometer with the accuracy and speed of a dial indicator. Total retraction of the gage is dependant on the range of the indicator. It can be provided with a dial indicator balanced or continuous or digital indicator of your choosing.

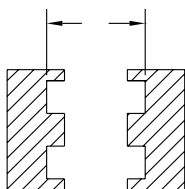


PR Series
gage

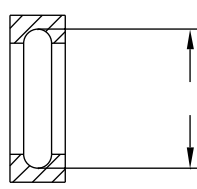
TYPICAL APPLICATIONS



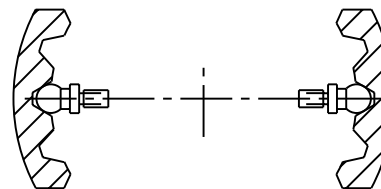
Bore



Groove
Diameter



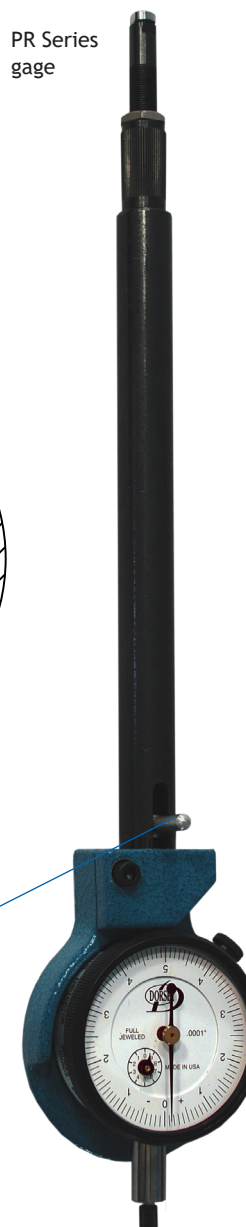
Ball Race
Radius Grooves



Pitch Diameter of
Gears and Splines

RETRACTABLE PIN GAGE "PR SERIES"		
PR6	6 - 12"	150 to 300
PR12	12 - 18"	300 to 450
PR18	18 - 24"	450 to 600
PR24	24 - 30"	600 to 750
PR30	30 - 36"	750 to 900

Retraction



PR Series pin gages have retraction based on the indicator travel and is best suited with a longer travel indicator.

These are available with a choice of any of Dorsey's #2 "High Amplification", "Traditional" dial indicators, or digital indicators.