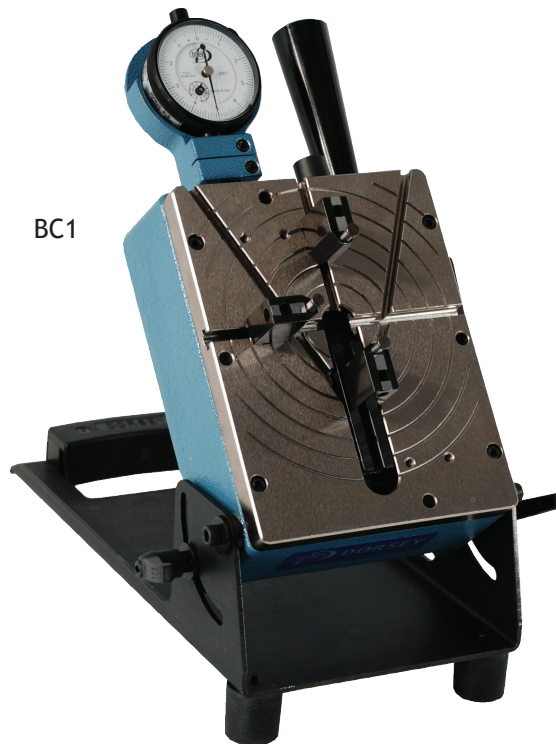


ADJUSTABLE INSIDE / OUTSIDE DIAMETER FIXTURES

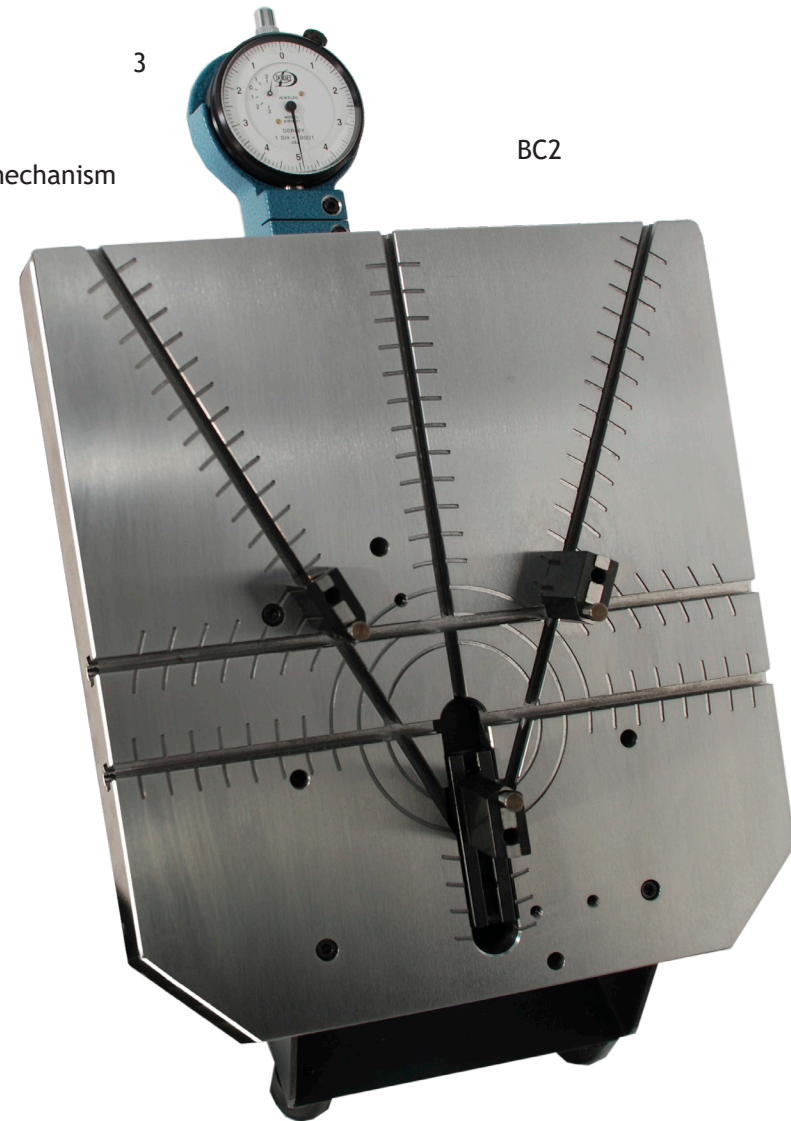
This comparator offers 2 or 3 point measurements for both ID and OD on one benchtop plate. Features include 2 or 3 point measurement, linear ball bushing movement, and a wide range of adjustment. The fixture can be positioned at any angle from horizontal to vertical to duplicate the machining process angle, eliminating deflection and deformation variation as potential sources of error. Hardened steel contact holders provide a work surface that ensures years of accurate, trouble free use.

FEATURES:

- Gage is supplied with model 2DM025-01 .0001" graduation 1:1 dial indicator, contact holders, and BCC-GS25 contact set
- Reversing the top plate selects either ID or OD
- Base with carrying handle features 90 degrees of adjustment with angle locking mechanism
- .400" linear gaging or retraction range
- Patented precision linear ball bushing gaging mechanism
- Ground and plated work stage 5.25" x 6.75" on BC1 and 9.75" x 10.75" on BC2
- Witness lines aid with gage alignment
- 2 Hex adjustment wrenches
- Special contacts designed per requested application



BC1



BC2

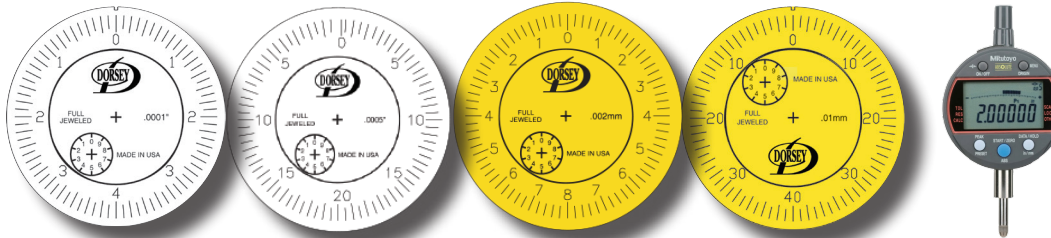
Note: Special ratio 4:5 dial indicator or electronically compensated digital indicator is required for 3 point non-diametric contact arrangement. See page 57 for optional indicators.

ORDERING INFORMATION

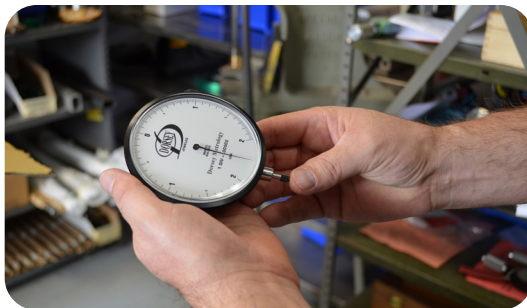
PART #	DESCRIPTION	"T" CONFIGURATION		"Y" CONFIGURATION	
		ID RANGE	OD RANGE	ID RANGE	OD RANGE
BC1	Gaging Fixture with 3 contacts, 3 holders, and .0001" grad. indicator	.75" - 4.44"	.25" - 5.19"	.75" - 5.25"	.25" - 6.00"
BC1-NI	Same as above, less indicator	.75" - 4.44"	.25" - 5.19"	.75" - 5.25"	.25" - 6.00"
BC2	Gaging Fixture with 3 contacts, 3 holders, and .0001" grad. indicator	2" - 8.44"	1.5" - 9.19"	2" - 10.00"	1.5" - 10.88"
BC2-NI	Same as above, less indicator	.75" - 4.44"	1.5" - 9.19"	2" - 10.00"	1.5" - 10.88"

4:5 RATIO INDICATORS FOR RECOMMENDED USE WITH 3-POINT "Y" CONFIGURATION

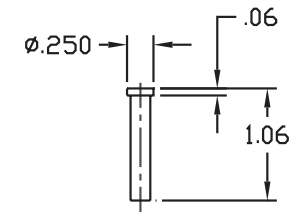
Example: .010 spindle travel is displayed as .008" on indicator



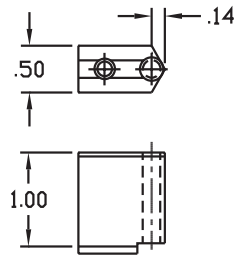
MODEL	2DMR025-01Z	2DMR125-05	2DMR005-002mm	2DMR5-01mm	MT543
Graduation	.0001"	.0005"	0.002mm	0.01mm	Selectable
Total Travel	.020"	.100"	0.4mm	4.0mm	.500"/12mm
Revolutions	2.5 Rev.	2.5 Rev.	2.5 Rev.	5 Rev.	N/A
Travel/Rev.	.008"	.040"	0.16mm	0.8mm	N/A



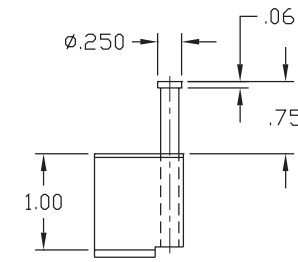
Dorsey Products -
proudly made in the USA



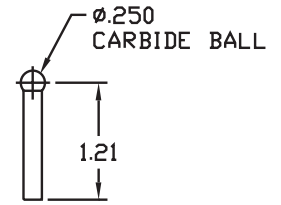
Part #BCC-GS25
Steel groove contact



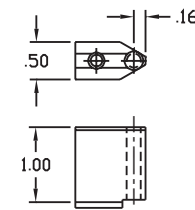
Part #2760-S (Steel)
Part #2760-C (Carbide)
Contact holder, sharp
(1 required)



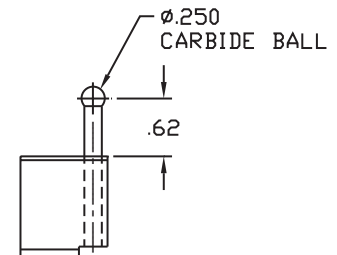
Part #BCC-GS25
Shown in contact
holder part #2760



Part #BCC-CB25
Carbide ball contact



Part #2759-S (Steel)
Part #2759-C (Carbide)
Contact holder, flat
(2 required)



Part #BCC-CB25
Shown in contact
holder part #2760