

MODEL 16H HORIZONTAL BEAM

This extremely accurate and versatile measurement instrument features our proven cast iron "ultra precision" stage system. Integrated fiber optic surface illumination and an electronic rotary screen protractor combine to make this the most accurate and versatile horizontal benchtop comparator available at any price.

FEATURES:

- 16"(400mm) Vertical screen for optimum viewing
- Erect profile image with fully corrected surface reflection image or optional fully corrected image
- High resolution ground glass screen with calibration reticle, 90 degree cross lines and chart clips
- Machined chart ring with vernier protractor, 1 minute graduation
- Output for electronic rotary screen protractor with selectable 1 minute or 1/100 of a degree resolution
- Coated telecentric parfocal optics
- Quick change single lens mount
- Fiber optic surface illumination
- Integrated hood
- Nickel plated, completely cast iron workstage
 - Triple axes solid crossed roller stage system
 - Twin universal dovetails
 - 18" x 5" overall size
 - 10" X axis travel with "glide release"
 - 6" Y axis travel (rise & fall)
 - 150 lbs. capacity
 - ±15 degree true parfocal helix table adjustment, with 5 minute vernier
- Available with 3 axes of measurement
- Optional 20" extended stage travel on "X" axis
- Available with internal edge sensing
- Optional swing away lamp house arm
- Optional motorized CNC full computer controlled readout systems
- NIST traceable calibration certificate
- Harsh Environment package
- 2 Year limited warranty



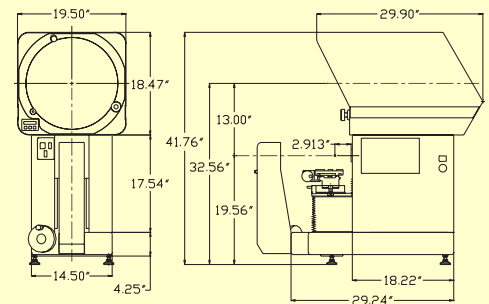
This ultra precision system utilizes an integrated zero backlash, high resolution scale, and a free state, normalized zero stress stage. These features combine to attain inherent accuracy and repeatability values as high as .000010" without electronic compensation.

Available with
Dorsey Duralume
Patented 10 year light source

TECHNICAL SPECIFICATIONS

Illumination	Profile: Built-in 24V/150W direct collimated halogen Surface: Built-in 24V/250W via fiber optics
Screen Size	16" (400mm) Ground glass with cross-lines
Workstage	Cast iron, nickel plated, 18" x 5", twin dovetail
Workstage Travel	X = 10" (250mm) Y = 6" (150mm) Focus = 2" (50mm) Surface: Built-in 24V/250W via fiber optics (x2)
Workstage Options	Optional increase of stage travel to 20" on X axis (500mm)
Workstage Accuracy	Within +/- 0.004mm +[(L/20).001]
Linear Scale Resolution	Standard: 0.001mm/.00005" Optional: 0.0005mm/.000020"
Repeatability	+/- 1 Scale count (0.001mm/.00005")
Coated Telecentric Lenses	5x, 10x, 20x, 25x, 31.25x, 50x, 62.5x, 100x
Optical Accuracy	Within +/- .10% Profile, +/- .15% Surface
Power Requirements	120V or 240V AC, 50/60 Hz, 10 Amp
Weight	460 lbs./210 kg.

DIMENSIONS



Proudly made in the USA

