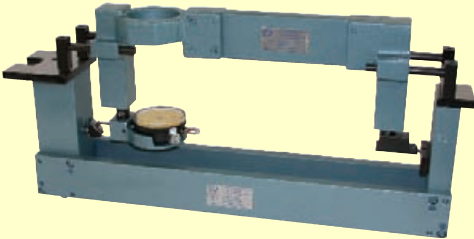


# SPECIAL FRAME CONFIGURATIONS

When using large diameter gages, the part configuration, tooling or fixturing can present obstacles that make part inspection impossible with standard frame gages. Below we have listed some typical frame configurations to help overcome these obstacles. Contact us for further details.

## HUMP FRAME (-HF)

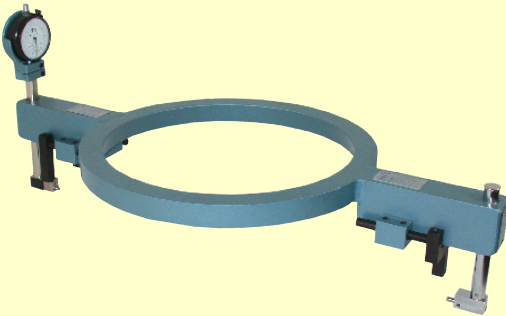
*\*Note: Gage pictured to the left is an LDDF-12-CB-HF-HRL-NI and the setmaster is SMF-12-GD6*



The gage shown here is a LDDF with a Hump frame design. This design can be used on the LDF, LDDF or the LDLTF to increase the rigidity of the vertical gaging shafts by extending the support castings up to 5.5" deeper. It is generally recommended to use this type of frame design if the gaging depth exceeds 6". Add "-HF" to the part # of the basic gage to select this option.

## DONUT FRAME (-DF)

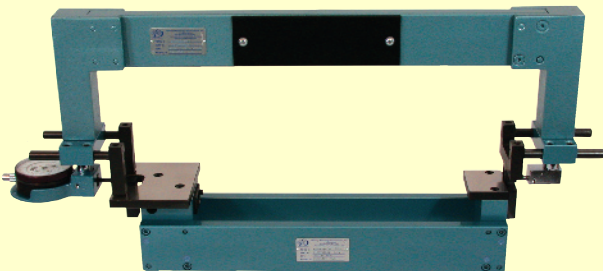
*\*Note: Gage pictured to the left is an LDF-18-SP-GD3-DF11-NI*



The gage shown here is a LDF with donut frame design. This design can be used on LDF, LDDF or LDLTF. The donut design permits the gage to completely encircle a large obstruction such as the part's hub, case, clamp or fixture setup. We offer standard castings with 7", 9" or 11" ID. Add "-DF7", "-DF9" or "-DF11" to the part # of the basic gage to select this option. Special size donut frames are also available. Prices are quoted upon request.

## BRIDGE FRAME (-BF)

*\*Note: Gage pictured to the left is an LDDF-18-SP-BF-FC150-NI and the setmaster is SMF-18-GD1*



The gage shown here is a LDDF with a bridge frame design. This design permits the gage frame to bridge over short center obstructions such as posts, clamps or raised contours. These castings extend and support gaging extension shafts in order to gain measuring rigidity. This raises the frame 2.75". Add "-BF" to the part # of the basic gage for this option.

## "C" FRAME (-CF)

*\*Note: LDC Series gages are designed for a specific application. Contact us for specific details.*



LDC series "C" frame gages are used for applications where the gage cannot be placed directly over the part. The frame is intended to partially encircle the part and is "side loaded" during use. The "C" frame can be made from contoured aluminum, a lightweight honeycomb composite or it can be a weldment depending on the requirements of the application. Cam style (LDF), lever style (LDLT) or direct read type (LDD) transfer mechanisms can be used on this frame. General measurements for standard configurations is as follows: 0-16" diameter, 16"-24" diameter, 24"-36" diameter. Contact the factory for details including pricing.

Proudly made in the USA

