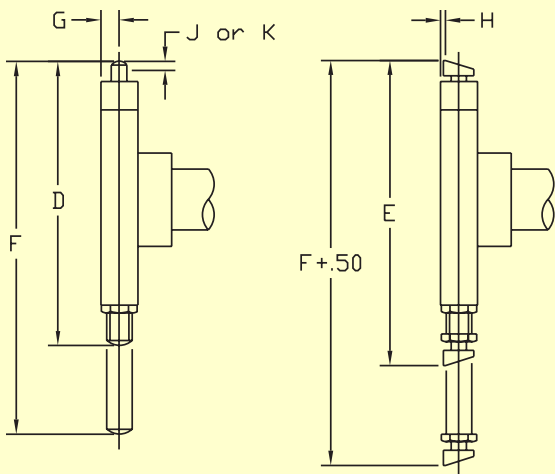


# DORSEY STANDARD BORE GAGES

GAGE SIZE	STANDARD STYLE 1			RIGHT ANGLE STYLE 2				VERTICAL STYLE 3			PERPENDICULAR STYLE 4			PISTOL GRIP STYLE 5		FLUSH STYLE 7	
	A		B	A		B	C	A		B	A		B	A	B	B	
	STD	MIN		STD	MIN			STD	MIN		STD	MIN		STD	MIN		
2	2.50"	2.31"	8.12"	2.53"	2.35"	3.88"	6.25"	6.0"	2.31"	8.75"	6.0"	2.31"	8.13"	1.63"	1.63"	5.75"	-
3	5.00"	2.63"	10.50"	2.53"	2.35"	3.88"	6.25"	6.0"	2.63"	9.0"	6.0"	2.63"	8.13"	1.63"	1.63"	5.75"	-
4	5.00"	2.63"	10.50"	2.53"	2.35"	3.88"	6.25"	6.0"	2.63"	9.00"	6.0"	2.63"	8.13"	1.63"	1.63"	5.75"	-
5	6.00"	2.63"	11.50"	2.53"	2.35"	3.83"	6.25"	6.0"	2.63"	9.00"	6.0"	2.63"	8.13"	1.63"	1.63"	5.75"	-
6	6.00"	2.63"	12.00"	2.50"	2.50"	4.44"	6.69"	6.0"	5.50"	9.44"	6.0"	4.00"	8.13"	3.00"	3.00"	9.38"	1.50"

Note: Additional range ext. up to 36" available for #6



## GAGE-HEAD DIMENSIONS (ALL STYLES)

SIZE	D		E		F	G	H	J	K	RANGE EXTENSION ADAPTER PART #
	MIN	MAX	MIN	MAX						
2	1.00"	1.53"	1.19"	1.69"	1.75"	.195"	.140"	.025"	.050"	DS-B0-85929
3	1.5"	2.16"	1.69"	2.56"	3.13"	.224"	.156"	.025"	.050"	DS-B0-85934
4	2.12"	3.13"	2.56"	3.56"	4.00"	.224"	.032"	.025"	.075"	DS-B0-85942
5	3.09"	6.13"	3.50"	6.44"	8.00"	.224"	.032"	.025"	.075"	DS-B0-85952
6	6.00"	12.13"	6.44"	12.63"	24.00"	.312"	.032"	.030"	.100"	DS-B0-85966

- D = Standard gaging range
- E = Gaging range with optional offset contacts
- F = Maximum gaging range with extension adapters
- G = Standard center line
- H = Offset center line modification add -H to part #
- J = Standard gaging plunger travel
- K = Optional extended plunger travel add -K to part #

## "A" LENGTH DATA AND FORMULAE

MAXIMUM RECOMMENDED "A" LENGTH	
STYLE	INCHES
2	60
3	72
4	96
5	144
6	144

## CONTACT MATERIALS

Steel (Standard), tungsten carbide, or diamond are supplied in the following quantities unless otherwise specified

### Size 2, 3, 4, or 5

- 1 gaging plunger
- 2 centralizing plungers (diamond not available)
- 1 interchangeable reference contact

### Size 6

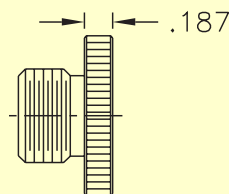
- 4 interchangeable contacts

Note: Materials may be specified intermixed

## BORE GAGE DUST CAP:

- Replaces standard handle
- Minimize overall length ("B" dimension)

SIZE	REDUCES "B" DIM. BY	PART #
2-6	2.06"	DS-BO-84725
6 Heavy Duty	2.81"	DS-BO-84731



Proudly made in the USA

