

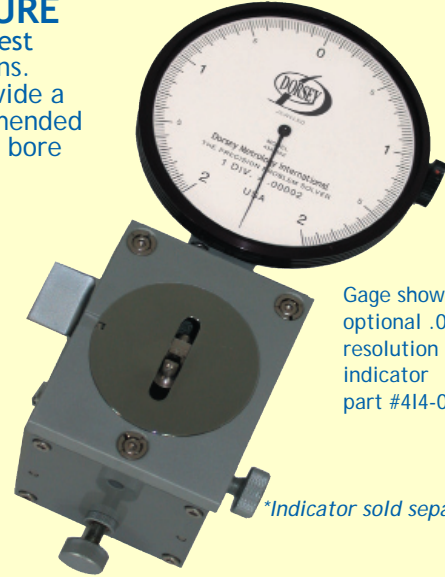
SMALL BORE GAGE BST-2B

RETRACTABLE INSIDE DIAMETER MEASURING FIXTURE

This versatile benchtop fixture utilizes a cast iron base, interchangeable rest plates and contact points which allows adaptation to suit many applications. Three standard contact sets and 2 standard rest plates are utilized to provide a measuring range of .080" to .91". For production applications, it is recommended that special contact points be designed slightly smaller than the minimum bore diameter of the part to be measured.

FEATURES:

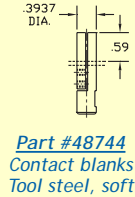
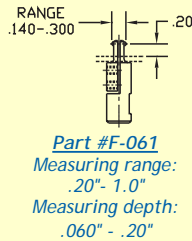
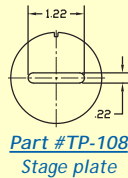
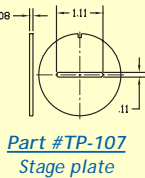
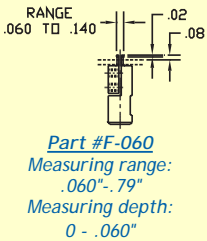
- Reed spring mechanism- minimizes friction.
Assures repeatability through years of service
- 2" diameter hardened steel workstage
- Measurement range .080" - .91" (2mm - 23mm)
- Contact retraction .187" (5mm)
- Gaging contact travel .040" (1mm)
- Fixed gaging pressure of 1.47N (150gf)
- Adjustable measurement depth of .120" (3mm)
- Gage includes standard contact set part #F-060
- Wooden storage case included



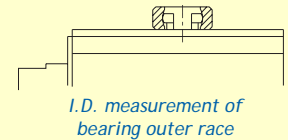
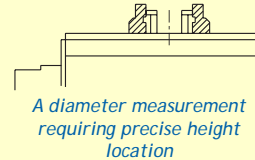
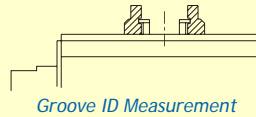
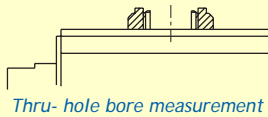
Gage shown with optional .00002" resolution dial indicator part #414-002

*Indicator sold separately

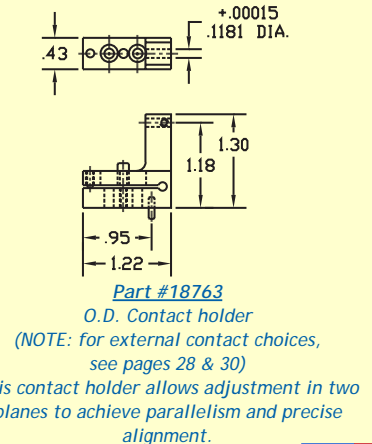
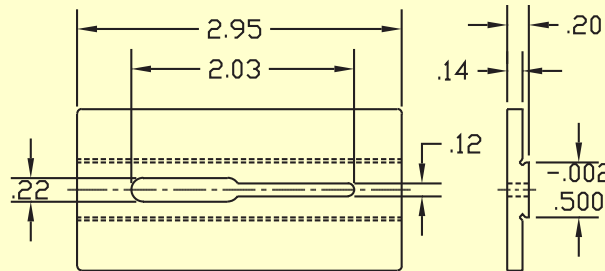
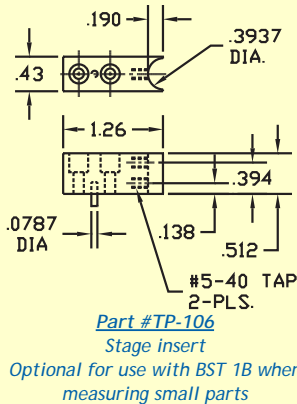
BST-2B



CITIZEN



BST 1B



Proudly made in the USA

