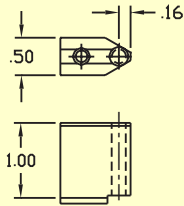
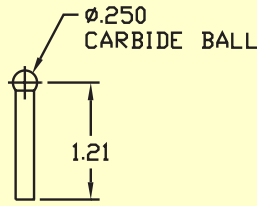


# BC UNIVERSAL ID/OD BENCH

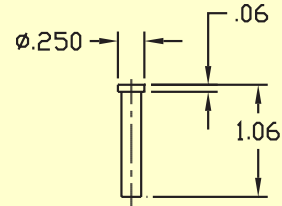
ORDERING INFORMATION					
PART #	DESCRIPTION	"T" CONFIGURATION		"Y" CONFIGURATION	
		I.D. RANGE	O.D. RANGE	I.D. RANGE	O.D. RANGE
BC1	Gaging Fixture with 3 contacts, 3 holders and .0001" grad. indicator	.75" - 4.44"	.25" - 5.19"	.75" - 5.25"	.25" - 6.00"
BC1-NI	Same as above, less indicator				
BC2	Gaging Fixture with 3 contacts, 3 holders and .0001" grad. indicator	2" - 8.44"	1.5" - 9.19"	2" - 10.00"	1.5" - 10.88"



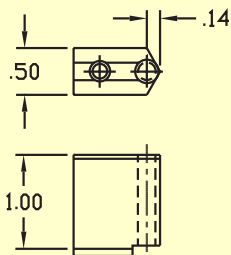
*Part #2759-S (Steel)  
Part #2759-C (Carbide)  
Contact holder, flat  
(2 required)*



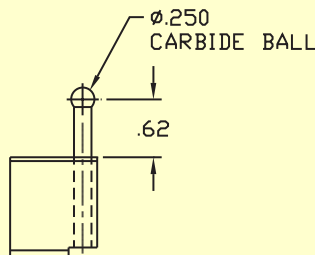
*Part #BCC-CB25  
Carbide ball contact*



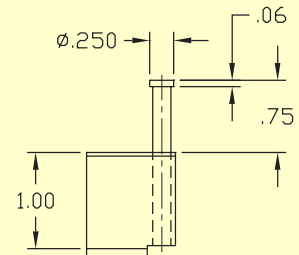
*Part #BCC-GS25  
Steel groove contact*



*Part #2760-S (Steel)  
Part #2760-C (Carbide)  
Contact holder, sharp  
(1 required)*



*Part #BCC-CB25  
Shown in contact  
holder part #2760*



*Part #BCC-GS25  
Shown in contact  
holder part #2760*

## 4:5 RATIO INDICATORS FOR RECOMMENDED USE WITH 3 POINT

Example: .010 spindle travel is displayed as .008" on indicator



MODEL	2DMR025-017	2DMR125-05Z	2DMR005-002mmZ	2DMR5-01mmZ	MT543-287B
Total Travel	.02"	.100"	0.4mm	4.0mm	.5"/12mm
Graduation	.0001"	.0005"	0.002mm	0.01mm	Selectable
Revolutions	2.5 Rev.	2.5 Rev.	2.5 Rev.	5 Rev.	N/A
Travel/Rev.	.008"	.040"	0.16mm	0.08mm	N/A

Proudly made in the USA

