

I.D. INDICATING PLUG GAGE

Dorsey's indicating plug gages are used for repetitive bore measurement applications where extreme accuracy is important. These high accuracy gages often take the place of air or electronic bore gages.

FEATURES:

- Self centering plug head eliminates operator influence for extremely accurate applications
- Non tipping design offers fast / simple accurate results
- Carbide contacts are housed and protected by a dedicated hardened steel sleeve which is ground approximately .001" smaller than the lower limit of the bore being inspected
- Single dial unit housing can be used with interchangeable plug heads
- Plug heads: choice of 3 "H" dimensions allows measurement of thru bores, blind holes or super blind holes

HOW TO ORDER:

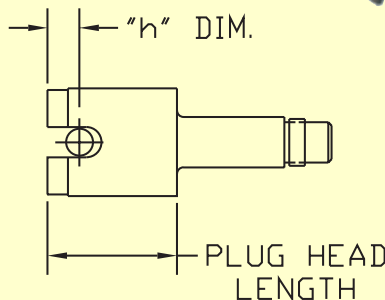
- 1) Select measurement head size
- 2) Determine if extension is required
- 3) Select adapter # for dial unit housing
- 4) Select an indicating device (see page A-14)

Part# DX4-81037
Digital indicator housing
(indicator not included)

PLUG HEAD DIAMETER		THRU BORES H= .400"	BLIND BORES		SUPER BLIND BORES H= .039"
INCHES	MM	HEAD	HEAD	H DIM	HEAD PART #
.098 - .117	2.5 - 2.9	N/A	D240-035	1.5mm	N/A
.118 - .157	3.0 - 4.0	D240-400	D240-040	1.5mm	D240-500
.158 - .236	4.1 - 6.0	D240-405	D240-050	1.8mm	D240-505
.237 - .472	6.1 - 12.0	D240-410	D240-052	2.5mm	D240-510
.473 - .787	12.1 - 20.0	D240-415	D240-055	2.5mm	D240-515
.788 - 1.181	20.1 - 30.0	D240-420	D240-060	2.5mm	D240-520
1.182 - 1.574	30.1 - 40.0	D240-425	D240-065	3.5mm	D240-525
1.575 - 2.362	40.1 - 60.0	D240-430	D240-070	3.5mm	D240-530
2.363 - 3.150	60.1 - 80.0	D240-435	D240-075	4.0mm	D240-535
3.151 - 3.397	80.1 - 100.0	D240-440	D240-080	4.0mm	D240-540
3.398 - 4.331	100.1 - 110.0	D240-445	D240-085	4.0mm	D240-545
4.332 - 4.724	110.1 - 120.0	D240-450	D240-090	4.0mm	D240-550
4.725 - 5.118	120.1 - 130.0	D240-455	D240-095	4.0mm	D240-555
5.119 - 5.512	130.1 - 140.0	D240-460	D240-100	4.0mm	D240-560
5.513 - 5.906	140.1 - 150.0	D240-465	D240-105	4.0mm	D240-565
5.907 - 6.299	150.1 - 160.0	D240-470	D240-110	4.0mm	D240-570
6.300 - 6.693	160.1 - 170.0	D240-475	D240-115	4.0mm	D240-575
6.694 - 7.087	170.1 - 180.0	D240-480	D240-120	4.0mm	D240-580
7.088 - 7.480	180.1 - 190.0	D240-485	D240-125	4.0mm	D240-585
7.481 - 7.874	190.1 - 200.0	D240-490	D240-130	4.0mm	D240-590
7.875 - 9.000	200.1 - 230.0	D240-616	D240-617	4.0mm	N/A
PART# 1199	Plug head adapter, (to 5/8 dial unit housing)				
	Chrome plated plug head add -C to Par#				
-DS	For Depth stop, add -DS to end of Part#				

DEPTH EXTENSIONS FOR USE ON HEADS WITH DIAMETERS GREATER THAN .49" (12.5mm)	
PART #	DESCRIPTION
D240-309	3.9" (100mm) X .47" (12mm) DIAMETER
D240-310	9.8" (250mm) X .47" (12mm) DIAMETER
D240-311	19.7" (500mm) X .47" (12mm) DIAMETER
D240-312	29.5" (750mm) X .47" (12mm) DIAMETER

DEPTH STOP	
PART #	DESCRIPTION
-DS3	FOR PLUG OD LESS THAN 3.151"/80mm
-DS6	FOR PLUG OD LESS THAN 3.142 /80.1 TO 6.299"/160mm
-DS9	FOR PLUG OD LESS THAN 6.300"/160.1 TO 9.00"/230mm
WOODEN	D240B-3 up to 3" diameter
STORAGE BOX	D240B-6 up to 6" diameter



To order plug head, specify check diameter and min/max bore sizes

