

# ADJUSTABLE BORE GAGE SETMASTERS

Bore gages are comparator type instruments used to compare parts being manufactured (unknown sizes) to known dimensions. "Setting" the bore gage to a known dimension requires the use of a reference master. The master ring is the most common type reference master used in industry and each ring is limited to one specific hole size. This means that a master ring inventory can reflect a large investment. Dorsey's adjustable bore gage setmasters maintain all the advantages of master rings, but provide the added feature of adjustability. Within the specified capacity of each Dorsey "Setmaster", any dimension can be set by easily adjusting the master to a preset combination of gage blocks.

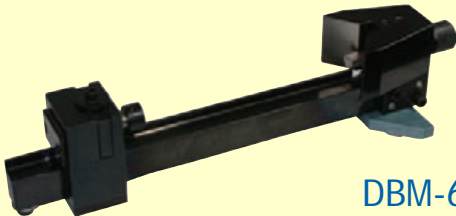
## FEATURES:

- Only four setmasters are required to cover a range between .25" and 24"
  - Mastering cycle repeatability within .000050"
  - Setting cycle repeatability within +/- .00010"
  - Ring correlation accuracy within +/- .00010"
  - Used to set DBL or DS Series bore gages
- Can also be used to set many other brands of bore gages -contact us for details

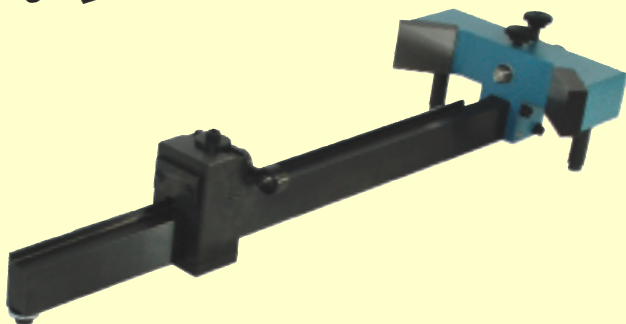
DBM-250 .25"-1"



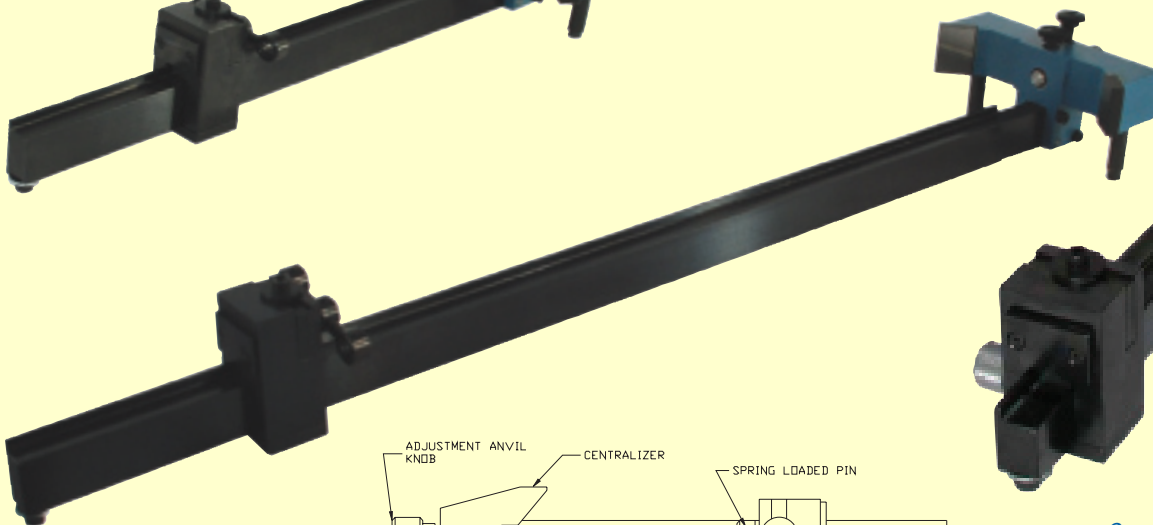
DBM-1000 1"-6"



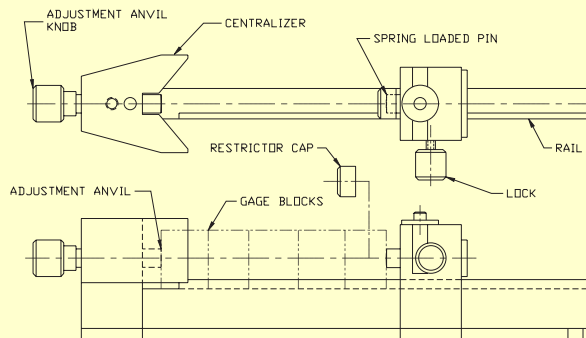
DBM-6000 6"-13"



DBM-12000 12"-24"



*DBL-300  
Shown being  
set with DBM-  
1000 master*



*Can also be used to  
set Dorsey standard  
bore gages*



Proudly made in the USA



C- 12



Dorsey Metrology International  
Website: [www.dorseymetrology.com](http://www.dorseymetrology.com)

Tel: (845) 454-3111 Fax: (845) 454-3888  
53 Oakley Street, Poughkeepsie, NY 12601