

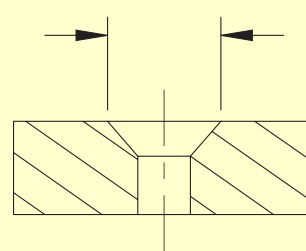
# COUNTERSINK & CHAMFER GAGES

## FEATURES:

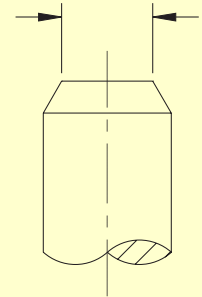
- Hardened and ground steel plunger and rest plate
- Masters on any flat surface, no special master required
- 3 Blade contact insures accurate repeatable readings
- .001" / 0.02mm dial indicator, standard
- Optional digital indicator - .0002" resolution on 90 degree or .004" resolution on 127 degree model
- Inch or metric indicators available
- Includes fitted storage box
- The angle of the gage must be larger than the angle of the part to be inspected
- Measures the top diameter directly on the dial indicator or digital indicator

JEWELLED MODELS			
SIZE	MODEL #	ANGLE	INDICATOR
0 - 1/2"	DC-90-500	0-90°	Dial Indicator
0 - 1/2"	DC-90-500-D	0-90°	Digital Indicator
0 - 1/2"	DC-127-500	90-127°	Dial Indicator
0 - 1/2"	DC-127-500-D	90-127°	Digital Indicator
0 - 12.5mm	DC-90-500-M	0-90°	Dial Indicator
0 - 12.5mm	DC-90-500-D-M	0-90°	Digital Indicator
0 - 12.5mm	DC-127-500-M	90-127°	Dial Indicator
0 - 12.5mm	DC-127-500-D-M	90-127°	Digital Indicator
0 - 1"	DC-90-1000	0-90°	Dial Indicator
0 - 1"	DC-90-1000-D	0-90°	Digital Indicator
0 - 1"	DC-127-1000	90-127°	Dial Indicator
0 - 1"	DC-127-1000-D	90-127°	Digital Indicator
0 - 25mm	DC-90-1000-M	0-90°	Dial Indicator
0 - 25mm	DC-90-1000-D-M	0-90°	Digital Indicator
0 - 25mm	DC-127-1000	90-127°	Dial Indicator
0 - 25mm	DC-127-1000-D-M	90-127°	Digital Indicator

I.D. gage measures this diameter



O.D. gage measures this diameter



Proudly made in the USA



B-8



Dorsey Metrology International  
Website: [www.dorseymetrology.com](http://www.dorseymetrology.com)

Tel: (845) 454-3111 Fax: (845) 454-3888  
53 Oakley Street, Poughkeepsie, NY 12601