

BG-DIRECT & BG-2 BENCH GAGE

BG Series bench gages are universal depth or flush pin gages used to check depths, lengths, face concentricity or locations.

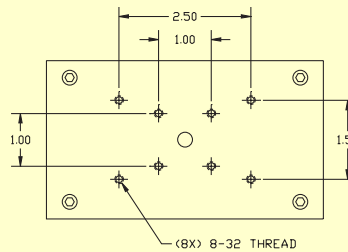
The BG Direct utilizes various models of a dial or digital indicators. The indicator is protected from damage as it is enclosed beneath the gage itself.

The rest plate is 3" x 5" hardened and ground steel which has a series of threaded holes. Special nesting rests or holding fixtures and clamps can be mounted to orient parts for measurement of specific dimensions.

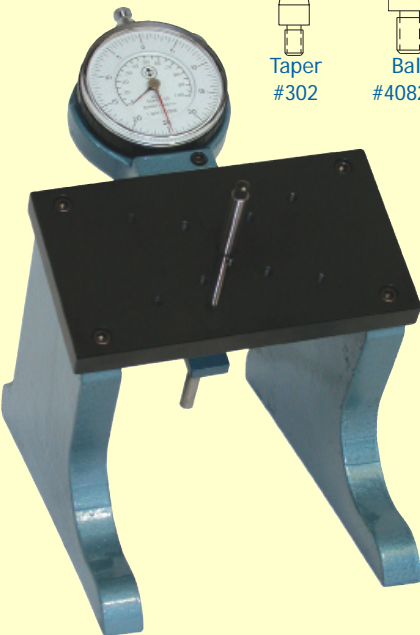
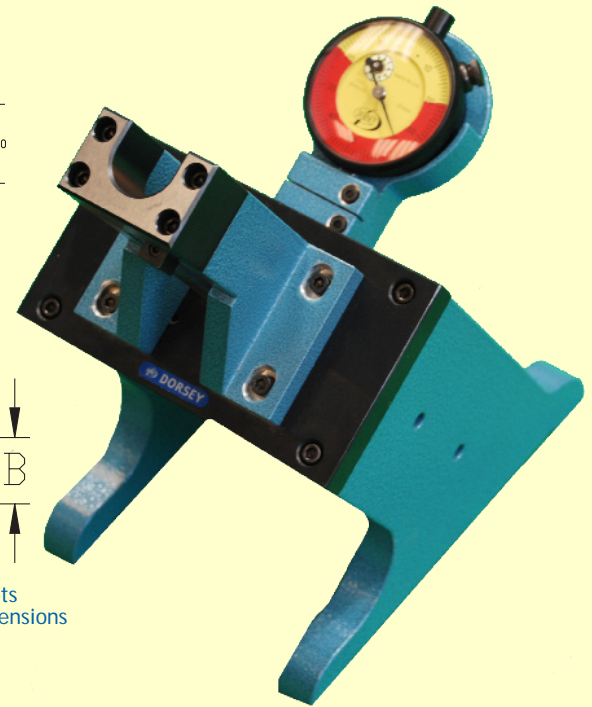
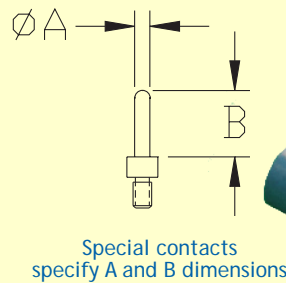
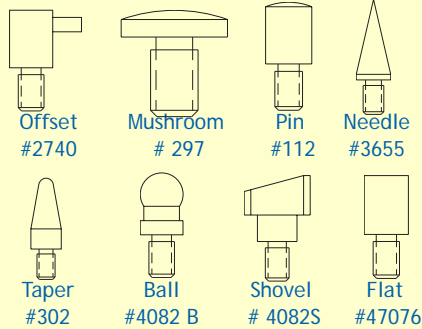


BG Direct

PART #	DESCRIPTION
BGD	Model BG Direct with Part #112 steel pin contact and (1" range, .001" graduation) dial indicator
BGD-NI	Model BG Direct with Part #112 steel pin contact less indicator
BGD-SET	Model BG Direct with set of steel contacts (shown below) (1" range, .001" graduation) dial indicator
BGD-SETNI	Model BG Direct with set of steel contacts (shown below) less indicator
BGD-CASE	FITTED STORAGE BOX



Top Plate Hole Pattern



BG-2 Bench Gage

The BG-2 utilizes a right angle movement that offers substantial benefits. The indicator, in a protective housing, is mounted above the rest plate in a position that minimizes operator eye movement. The gaging mechanism is reversible, retractable, has a 3" range of measurement travel and .075" of gaging travel.

PART #	DESCRIPTION
BG2	Model BG with Part #112 steel pin contact and (.0005" graduation) dial indicator
BG2-NI	Model BG with Part #112 steel pin contact and less indicator
BG2-SET	Model BG with set of steel contacts (shown above) and (.0005" graduation) dial indicator
BG2-SETNI	Model BG with set of steel contacts (shown above) less indicator
BGD-CASE	FITTED STORAGE BOX

Proudly made in the USA

