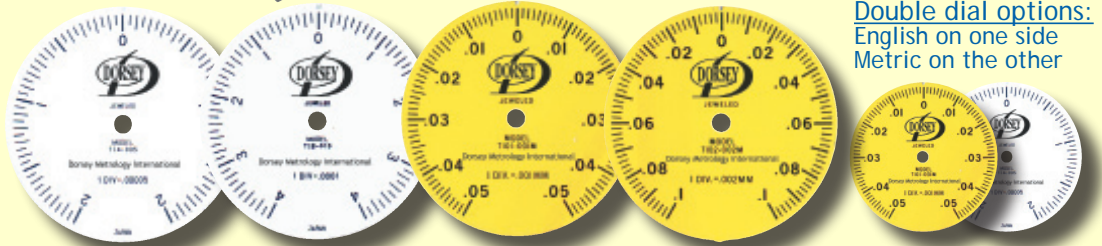
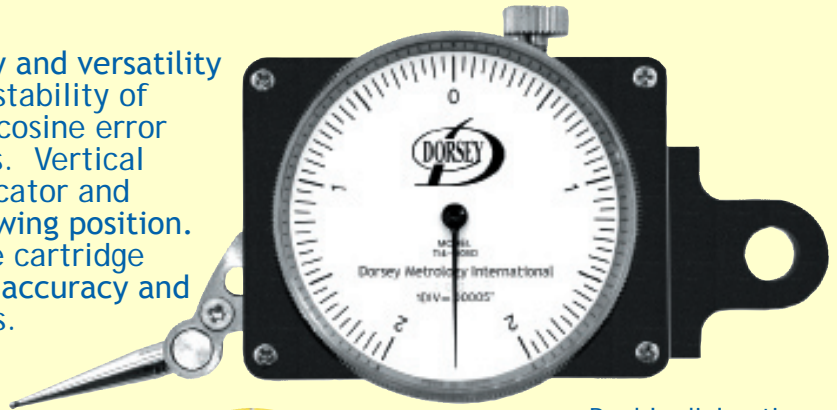


TI SERIES LINEAR TEST INDICATORS

This instrument combines the accessibility and versatility of a test indicator with the accuracy and stability of a pantograph gage. Its design eliminates cosine error inherent in all other test indicator designs. Vertical dials are located on both sides of the indicator and each can be rotated 360° for the best viewing position. These instruments feature Dorsey's unique cartridge style jeweled movement which maintains accuracy and repeatability throughout millions of cycles.



Double dial options:
English on one side
Metric on the other

Order Part #	TI4-005D	TI8-01D	TI01-001mm	TI02-002mm
Graduation	.00005"	.0001"	0.001mm	0.002mm
Range	.004"	.008"	0.1mm	0.2mm
Accuracy	+/- .00005"	+/- .0001"	+/- 0.001mm	+/- 0.002mm
Repeatability	+/- .00001	+/- .00002"	+/- 0.0002mm	+/- .0004mm

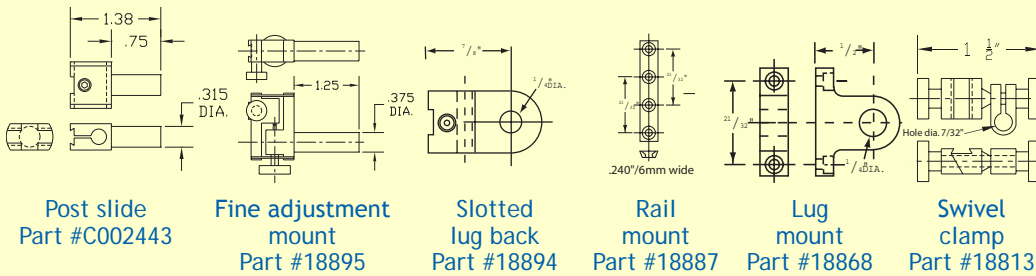
Grad:
0.001mm/.00005"
Part #TI01-TI4



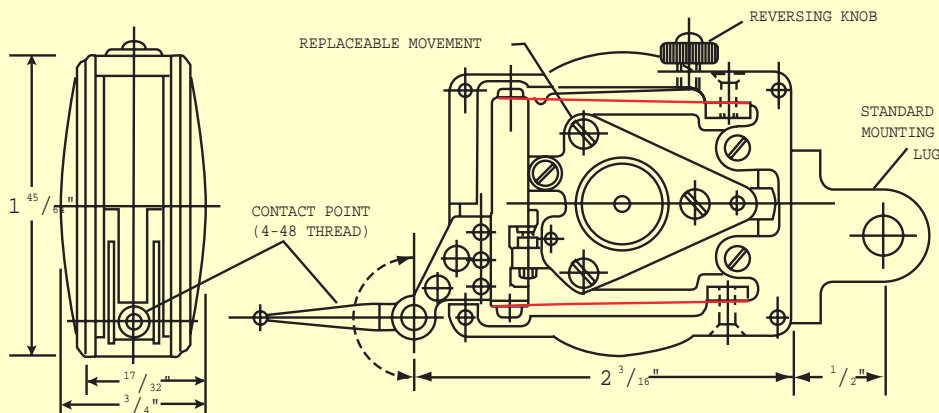
Grad: 0.002mm/.0001"
Part #TI02-TI8

*Part #s above include indicator, contact #18865 and lug mount #18868

For Kit	TI4-005DKIT	TI8-01DKIT	TI01-001mmKIT	TI02-002mmKIT
Includes #18973, 18974, 18975, 18894, 18887 plus indicator				



Contacts			
	Diameter	Material	Part #
	0.04	Steel	18865
		Carbide	18973
	0.08	Steel	18866
		Carbide	18974
	0.12	Steel	18867
		Carbide	18975



Fitted case
Part #TI-CASE



Proudly made in the USA

